

Igniting Multi Country Consolidation Logistics & Entrepot Logistics

Naveen Prakash

Co-founder

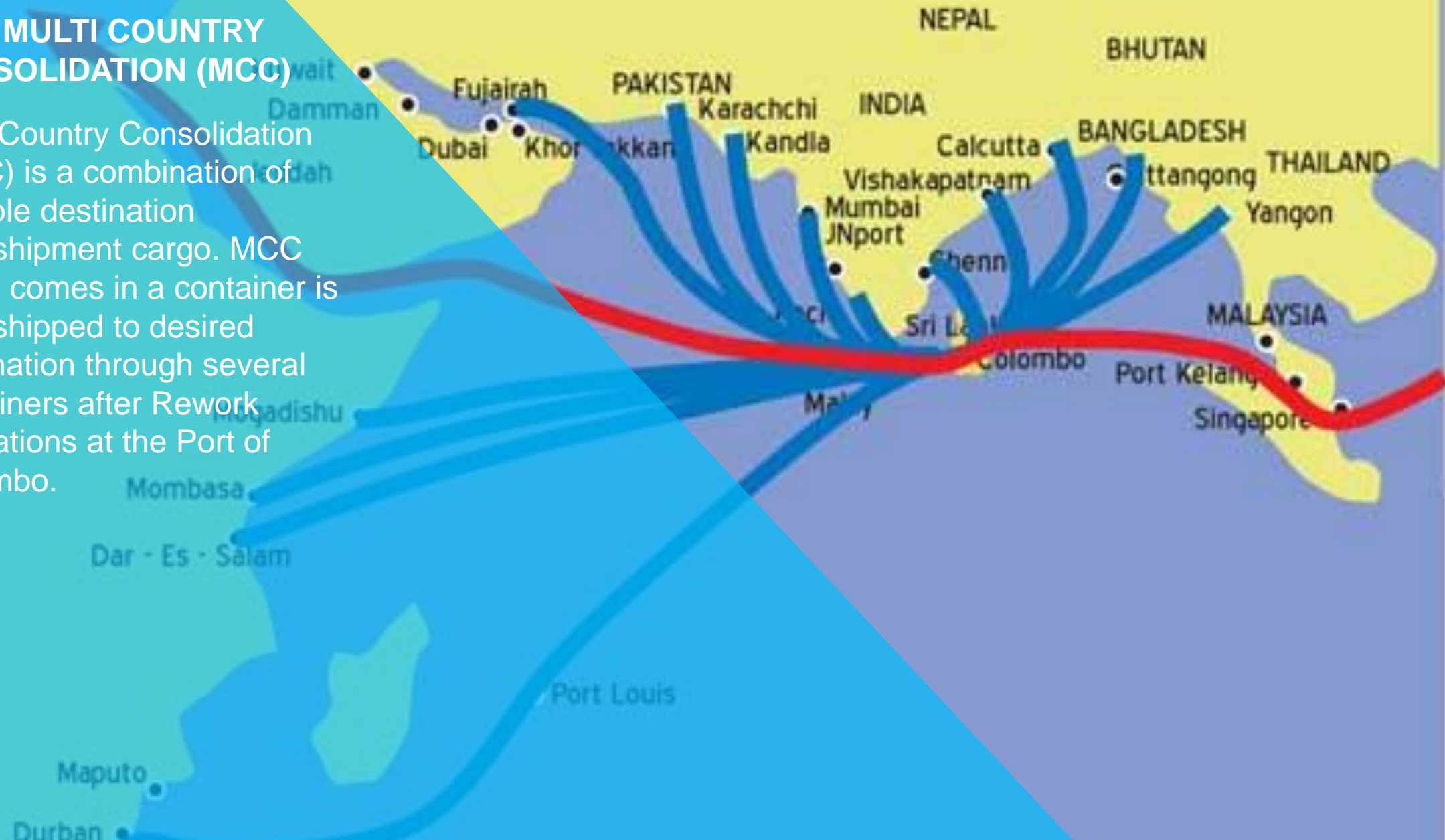
Global Logistics, India





MCC MULTI COUNTRY CONSOLIDATION (MCC)

Multi Country Consolidation (MCC) is a combination of multiple destination transshipment cargo. MCC cargo comes in a container is transshipped to desired destination through several containers after Rework Operations at the Port of Colombo.



In year 1998 Freight Systems started LCL consolidation in Sri Lanka called it MCC.

Until then we used to call it re-working and only Hub was Singapore.

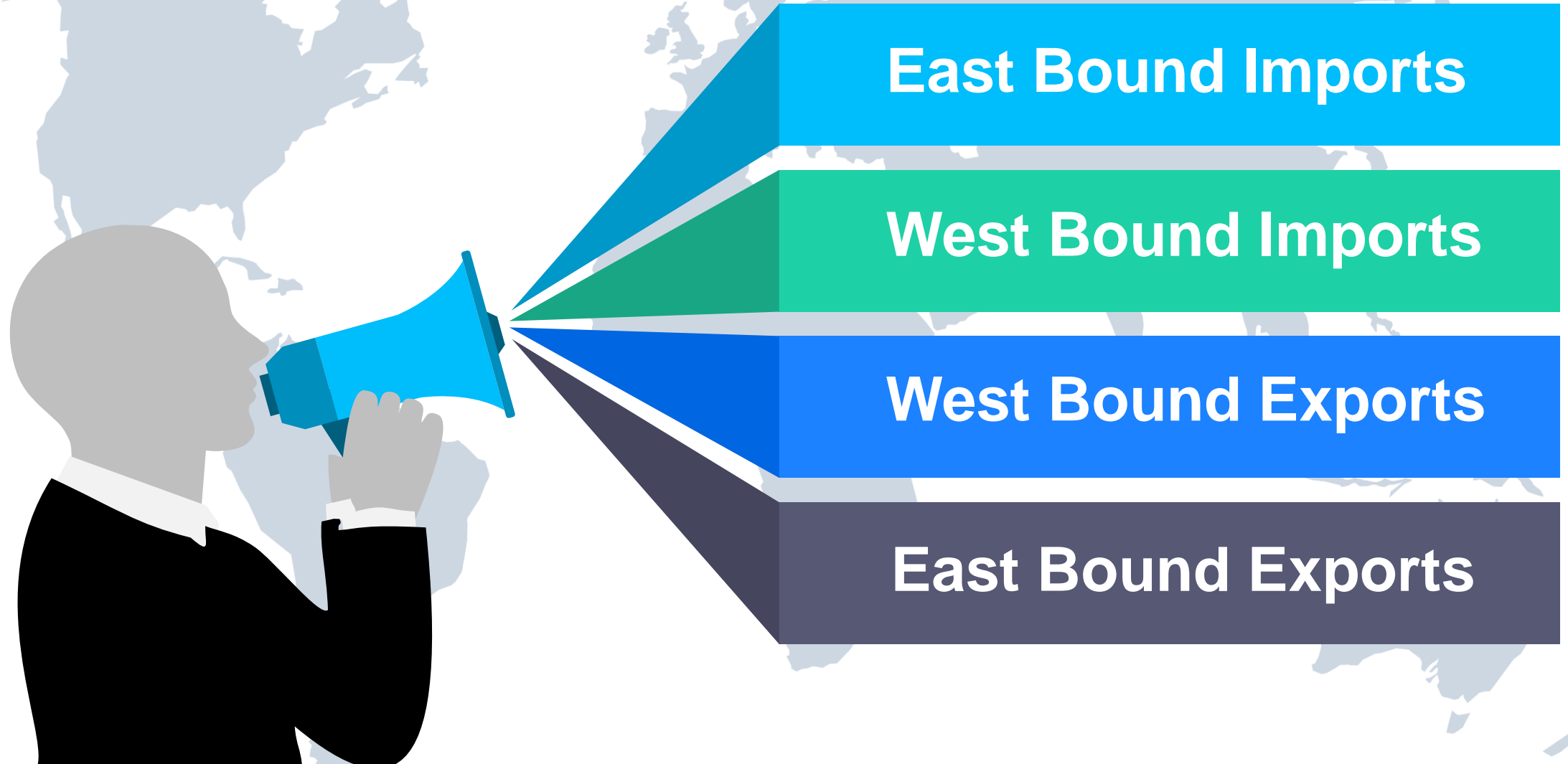
Later few more consolidators joined and started doing LCL transshipments via Colombo mainly catering to Middle East and Male.

Ports of Loading from India were mainly Chennai , Kolkata and Kochin.

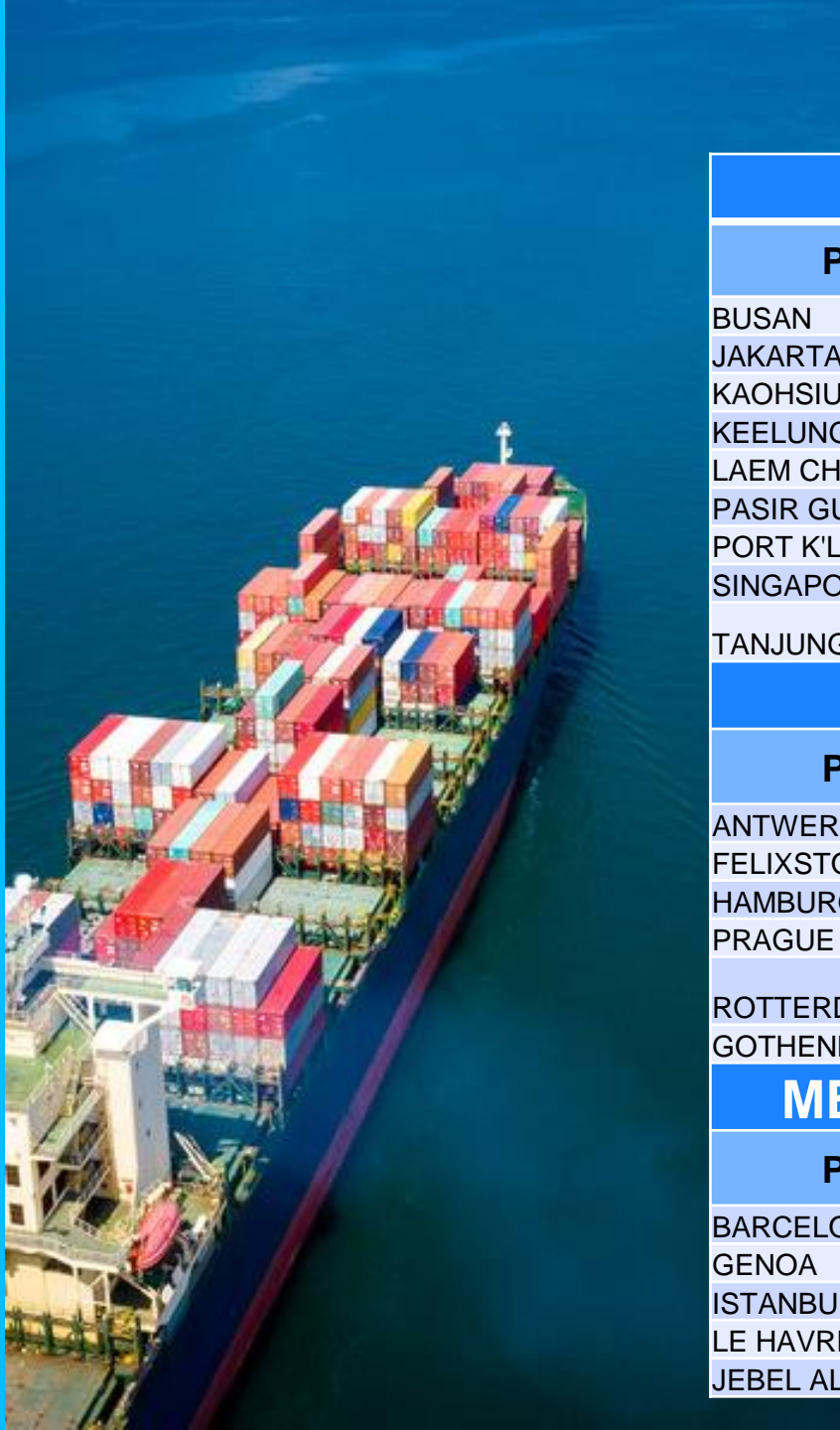
Later Bangladesh switched some shipments from Singapore to Colombo



Colombo became a popular LCL consolidation hub and gradually added more than 50 Ports under its transshipment on both East bound and West bound services.



Imports Direct to Colombo Based on LCL



IMPORT CONSOLIDATION SERVICES

ASIA		
POL	COUNTRY	T/T DAYS
BUSAN	KOREA	14
JAKARTA	INDONESIA	9
KAOHSIUNG	TAIWAN	13
KEELUNG	TAIWAN	13
LAEM CHABANG	THAILAND	7
PASIR GUDANG	MALAYSIA	3
PORT K'LANG	MALAYSIA	5
SINGAPORE	SINGAPORE	5
TANJUNG PELEPAS	MALAYSIA	3
EUROPE		
POL	COUNTRY	T/T DAYS
ANTWERP	BELGIUM	21
FELIXSTOWE	UK	26
HAMBURG	GERMANY	24
PRAGUE	CZECH REP	23
ROTTERDAM	NETHERLAND	21
GOTHENBURG	SWEDAN	28
MED & MIDDLE EAST		
POL	COUNTRY	T/T DAYS
BARCELONA	SPAIN	25
GENOA	ITALY	18
ISTANBUL	TURKEY	31
LE HAVRE	FRANCE	19
JEBEL ALI	DUBAI	8

CHINA		
POL	COUNTRY	T/T DAYS
GUANGZHOU/HUANGPU	CHINA	14
HONG KONG	HONG KONG	9
NINGBO	CHINA	13
QINGDAO	CHINA	18
SHANGHAI	CHINA	11
SHENZHEN	CHINA	12
XIAMEN	CHINA	11
XINGANG/TIANJIN	CHINA	21
USA		
POL	COUNTRY	T/T DAYS
NEW YORK	USA	33
INDIAN SUB		
POL	COUNTRY	T/T DAYS
CALCUTTA	INDIA	5
CHENNAI	INDIA	2
CHITTAGONG	BANGLADESH	5
COCHIN	INDIA	2
KARACHI	PAKISTAN	7
NHAVA SHEVA	INDIA	4
TUTICORIN	INDIA	2

Export Direct Consol LCL

EXPORT CONSOLIDATION SERVICES

ASIA	BANGKOK	TRANSIT	15
	BUSAN	TRANSIT	16
	HO-CHI MINH CITY	TRANSIT	13
	PORT KELANG	TRANSIT	5
	SINGAPORE	TRANSIT	5

MIDDLE EAST	AQABA	TRANSIT	10
	DUBAI	TRANSIT	5
	HAMAD	TRANSIT	12

EUROPE	BARCELONA	TRANSIT	23
	GENOA	TRANSIT	16
	KOPER	TRANSIT	25
	LE HAVRE	TRANSIT	24
	ANTWERP	TRANSIT	28
	DUBLIN	TRANSIT	30
	FELIXSTOWE	TRANSIT	31
	HAMBURG	TRANSIT	18
	ROTTERDAM	TRANSIT	21
	PRAGUE,CZECH REPUBLIC	TRANSIT	28
	GOTHENBURG	TRANSIT	22
	OSLO	TRANSIT	28

OCEANIA	AUCKLAND	TRANSIT	23
---------	----------	---------	----

JAPAN	TOKYO	TRANSIT	22
-------	-------	---------	----

JAPAN	TOKYO	TRANSIT	22
-------	-------	---------	----

OCEANIA	AUCKLAND	TRANSIT	23
---------	----------	---------	----

	OSLO	TRANSIT	28
--	------	---------	----

	GOTHENBURG	TRANSIT	22
--	------------	---------	----

	PRAGUE,CZECH REPUBLIC	TRANSIT	28
--	-----------------------	---------	----

	ROTTERDAM	TRANSIT	21
--	-----------	---------	----

CHINA	HONG KONG	TRANSIT	11
	SHANGHAI	TRANSIT	12

INDIAN SUB	BANGALORE	TRANSIT	10
	CALCUTTA	TRANSIT	5
	CHENNAI	TRANSIT	2
	CHITTAGONG	TRANSIT	6
	COCHIN	TRANSIT	2
	KARACHI	TRANSIT	6
	MALE	TRANSIT	2
	NHAVA SHEVA	TRANSIT	2
	TUTICORIN	TRANSIT	2

USA	LOS ANGELES	TRANSIT	27
	MONTREAL	TRANSIT	27
	NEW YORK	TRANSIT	21
	TORONTO	TRANSIT	23

AFRICA	DAR ES SALAAM	TRANSIT	12
	MOMBASA	TRANSIT	10
	PORT LOUIS	TRANSIT	10
	TEMA	TRANSIT	28
	KAMPALA	TRANSIT	16
	LAGOS	TRANSIT	22

--	--	--	--

--	--	--	--

--	--	--	--

--	--	--	--

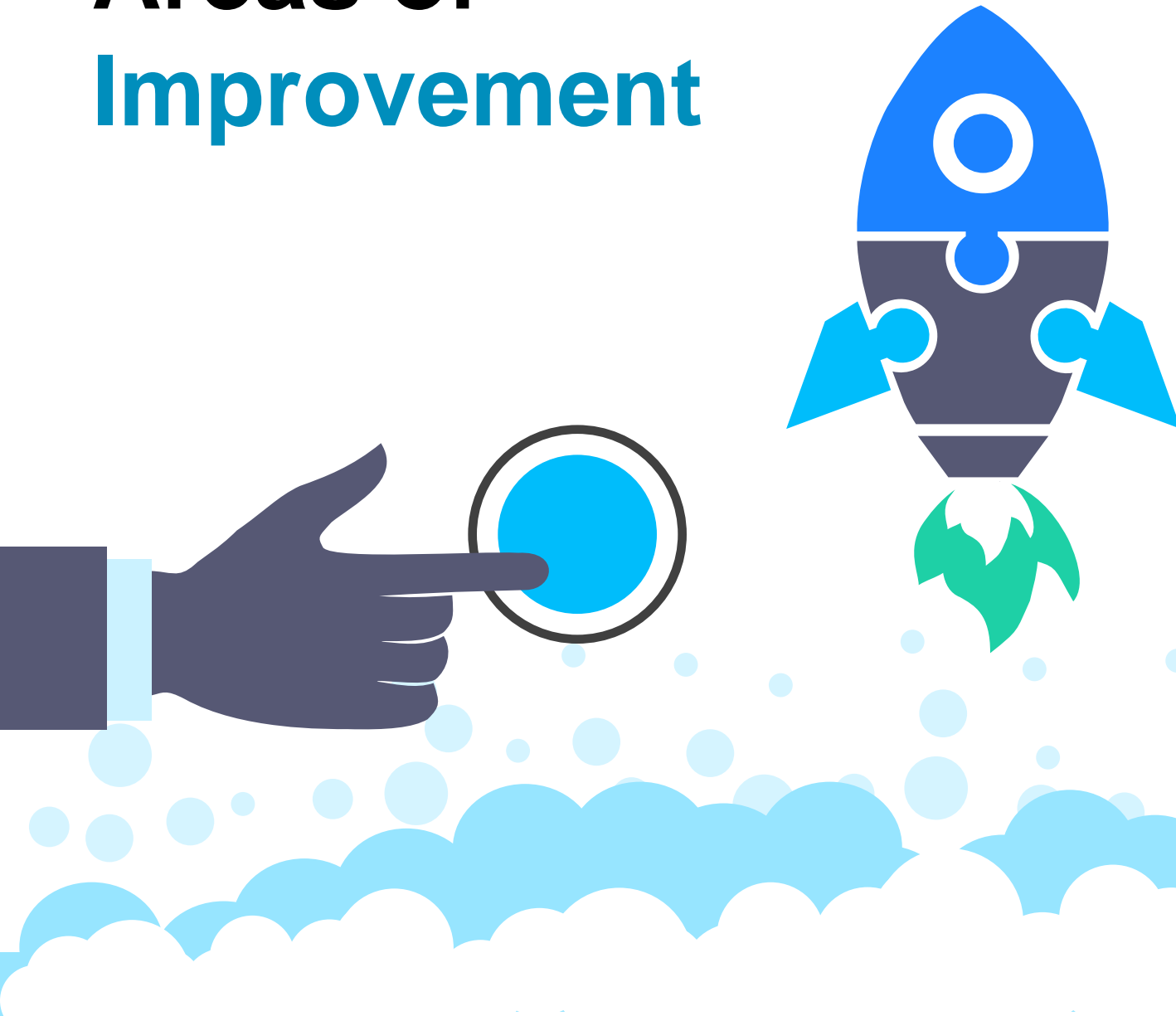
--	--	--	--

--	--	--	--

--	--	--	--



Areas of Improvement



1. Cargo Damages to be avoided with professional container load plan and operations.

2. Concept of 24 X 7 and 365 to be implemented to reduce transit time.

3. Stuffing and De-stuffing pictures to be shared on real time basis.

4. Re-Palletising formalities of transshipment cargoes to be permitted without much customs formalities.

5. Tally and Survey to be more robust.



Thank You